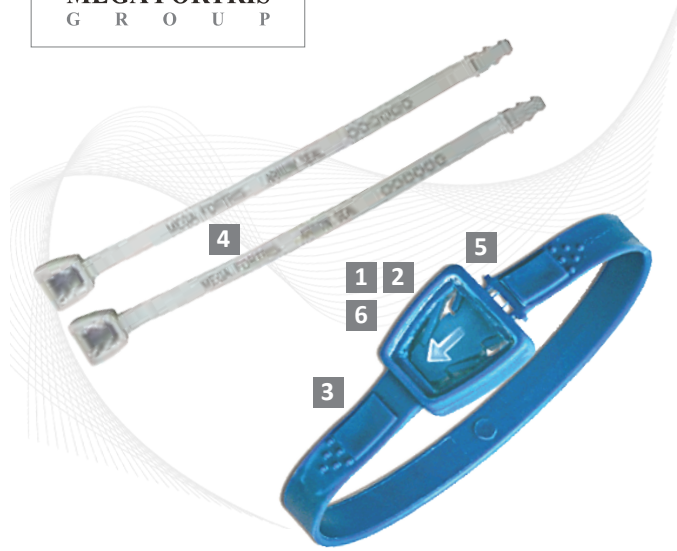


Indicative Seal · Data Sheet

Arrow Seal



Strong Indicative Ring Seal

The Arrow Seal is one of the most tamper evident ring seals in the world combining unique features like the Inspection Window, ultra sonic welding and a double locking mechanism.

The Arrow seal is constructed with a unique integrated Inspection Window that allows tamper detection at a glance. This feature is extremely valuable to operations with high traffic volume and high security requirements.

Features

- 1 The Inspection Window is a unique feature that enables quick and easy visual checking of the locking mechanism.
- 2 Ultrasonic welding is used to fasten caps to the seal. Ultrasonic welding is permanent and it is too strong to be cut or forced open without clear evidence of tampering.
- 3 The Arrow seal comes with anti-slip grips to make sealing easy and quick.
- 4 The Arrow seals are etched with permanent laser marking. Laser marking offers the highest level of security as it cannot be removed and replaced.
- 5 Security breaking lines at the snapping point provide easy removal of the seal and prevents a broken seal from being glued or welded together without leaving clear evidence of tampering.
- 6 The Arrow seal features a double locking mechanism that makes tamper attempts even more difficult.

Technical Specifications

PRODUCT

Material	Locking Space	Strap Dimensions mm	Pull Strength	Marking Area	Marking Digits
Body: Polypropylene	20.0 cm	1.0 x 8.0	35 kg	Cap: 0.5 x 13.0 cm Flap: 1.0 x 1.2 cm	Max 15

INNER CARTON

Carton Quantity	Dimensions mm	Weight kg/carton	Volume m ³ /carton
1,000 pcs	334 x 295 x 200	4.70	0.01971

OUTER CARTON

Carton Quantity	Dimensions mm	Weight kg/carton	Volume m ³ /carton
5,000 pcs	1030 x 305 x 350	24.09	0.10995

Standard Colours



FMM EXCELLENCE AWARD 2012
QUEST FOR CONTINUOUS IMPROVEMENT
BEST MANUFACTURER IN MALAYSIA IN 2012